

TUTORIAL

3. OSM MAPPING FROM YOUR COMPUTER

3.4 CHECKING THE OVERALL MAPPING CONSISTENCY



This publication is supported by the French Development Agency (AFD). Nevertheless, the ideas and opinions presented in this document do not necessarily represent those of AFD.

This tutorial is made available under the terms of the Creative Commons [Attribution – ShareAlike 4.0 International Licence](https://creativecommons.org/licenses/by-sa/4.0/)



3. OSM MAPPING FROM YOUR COMPUTER

3.4 CHECKING THE OVERALL MAPPING CONSISTENCY

3.4.1 HOW TO GET STARTED?

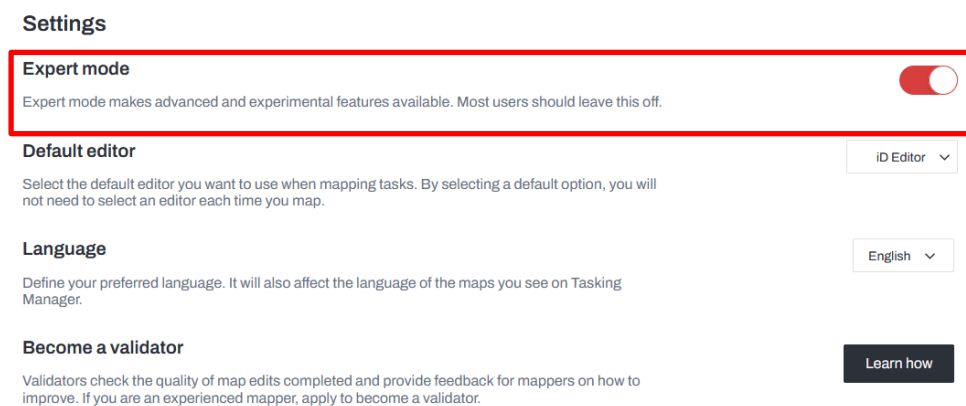
i. Choose a project

It is not possible to track the progress of the overall validation via HOT's Tasking Manager, nor to see if projects have already been reviewed or not, **so we advise you to contact the NGO of your choice who will be able to direct you to a project for validation.**

ii. Learn about the project

Although the global validation is not done via the TM, it is still important to know the project, its context and especially the instructions!

iii. Download the area of the project in the TM



You will need the perimeter of the project area to be able to upload the OSM data into JOSM. Then, go to the TM in your **Settings** by clicking on your profile, activate the **Expert Mode**. Then, go to the general description of your project and scroll to the bottom, a link **Download the area of interest** allows you to download the area in **".geojson"** format (a format very well adapted to JOSM).

iv. Open the geojson file containing the project area in JOSM

After opening JOSM, click on **File**, then **Open**.

v. Add an imagery background

Please **refer to the Tasking Manager instructions to choose the imagery.**

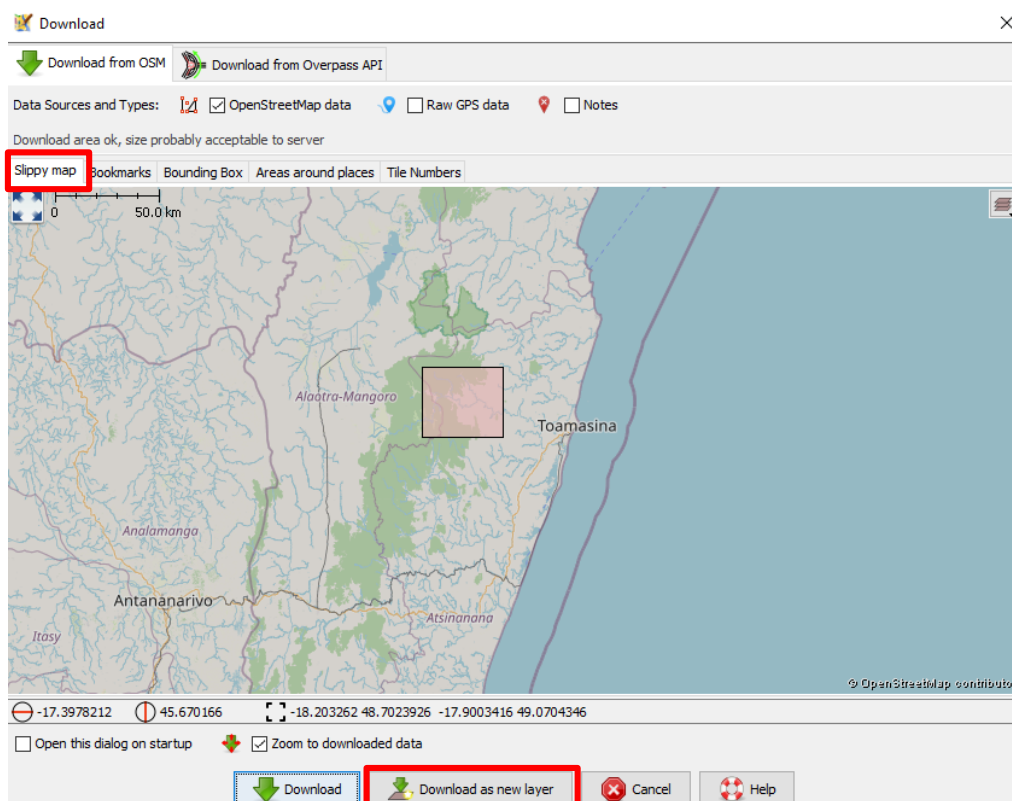
vi. Observe the location of the project in a more global environment

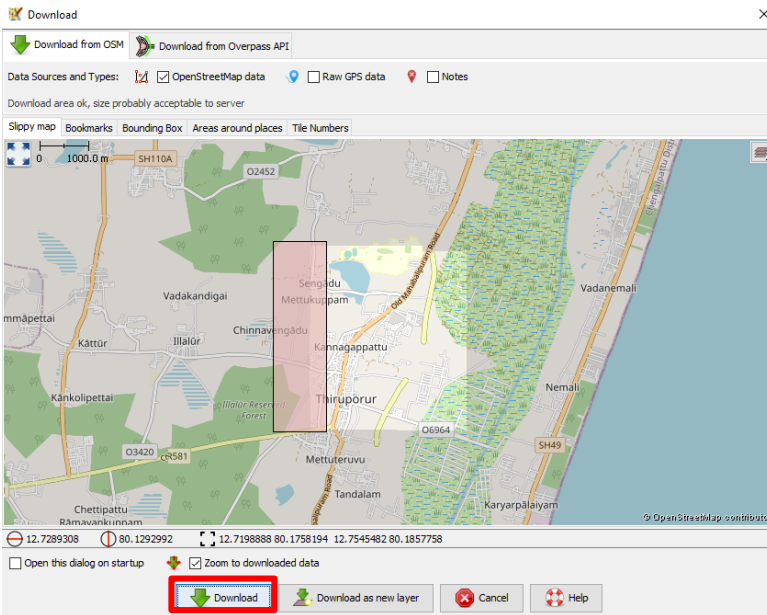


Here we can see, for example, that the project area (in red) is close to an important urban area. In this case, for example, it will be important to ensure that the roads connecting this area to the nearby city are mapped.

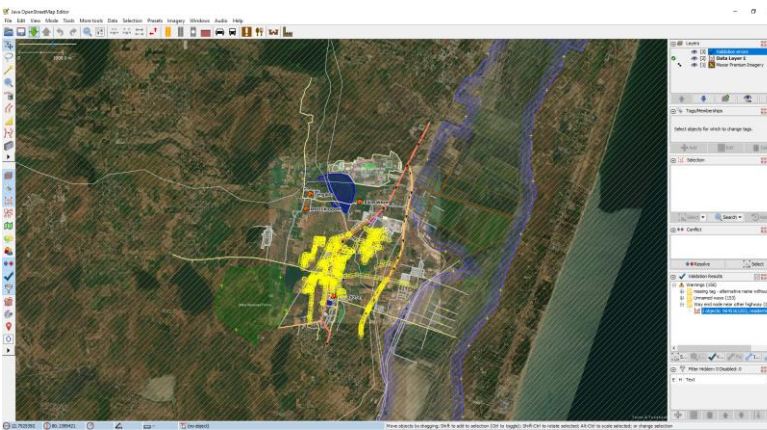
vii. Download all OSM data on the project area into JOSM

- Click on the **Download OSM data** button or **Ctrl+Maj+Down**.
- In the **sliding map** tab, the project area should already be pre-identified, so simply click on **Download to a new layer**. If possible, download an area slightly larger than the project area.





As the projects we work on are often vast, the number of objects on the whole area is often too important to download them to JOSM at once. You may receive an error message when the area you are requesting is too large.



In this case :

- Go back to **Download OSM data** tab **sliding map** and download a smaller area.
- Repeat this process to download another area adjacent to the first one.
- You can repeat this operation as many times as necessary to download the OSM data corresponding to the entire area you are working on.

Be sure to click on **Download** and not **Download to a new layer** so that all your data is on the same layer.

You are ready to start the global validation!